

# 'CAPUCINES' VASE

By Charles Schneider  
Circa 1925

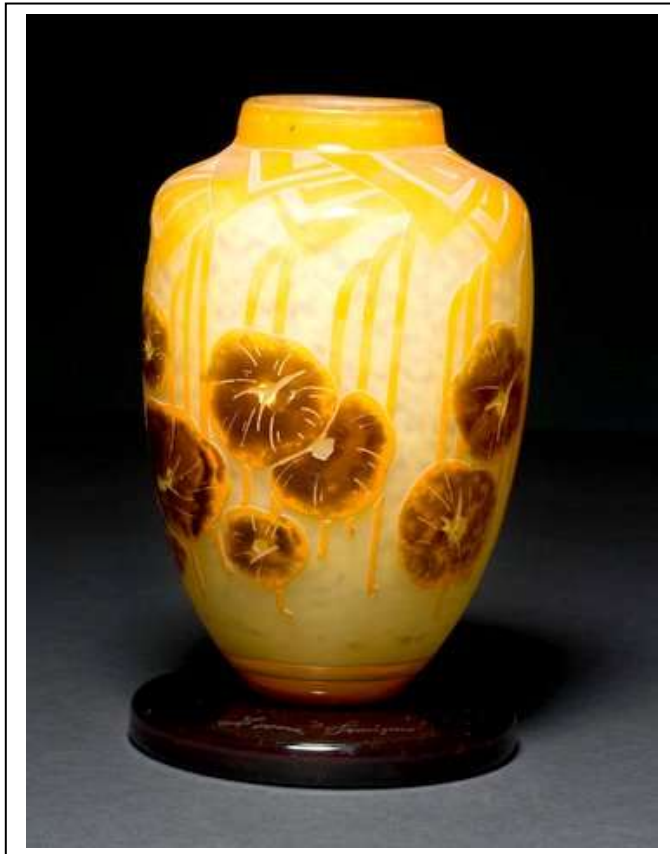
---

A footed vase, the glass internally mottled with white, an Art Deco geometric background decoration in orange, and *Capucines* (*Nasturtium*) blossoms with brown centers and orange surrounds, on a dark brown pedestal foot.

Height : 21 cms

Signatures : Cameo 'Le Verre Francais' on foot of the vase.

Reference : Gerard Bertrand, *Schneider, Maitre Verrier*, Editions Faton, 1995.



## BURR & MUIR

Cape Town 27-21-4221319  
Partners : Geoff Burr & Graham Muir