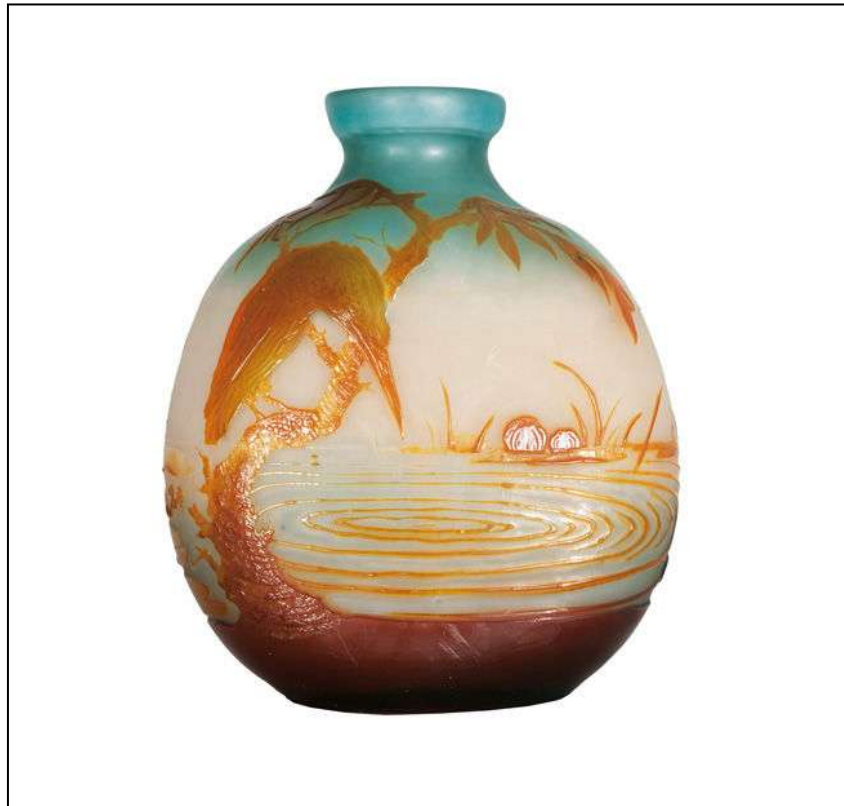


'KINGFISHER' VASE

By Emile Galle
Circa 1905

A large, moon flask-shaped overlaid, acid-etched and carved cameo glass vase, decorated with a *Kingfisher* perched on a branch above a pond.

Height : 29 cms
Signatures : Cameo *Gallé* and a star on side of vase.
Reference : Victor Arwas, 'Glass Art Nouveau to Art Deco',
Academy Editions, 1987, pgs. 106-153.



The *KINGFISHER* vase is a popular Gallé design, the design was put on vases of various shapes, including a similar shape to the one on offer, with applied handles either side of the vase.

BURR & MUIR

Cape Town 27-21-4221319
Partners: Geoff Burr & Graham Muir