

# 'EUROPA AND THE BULL'

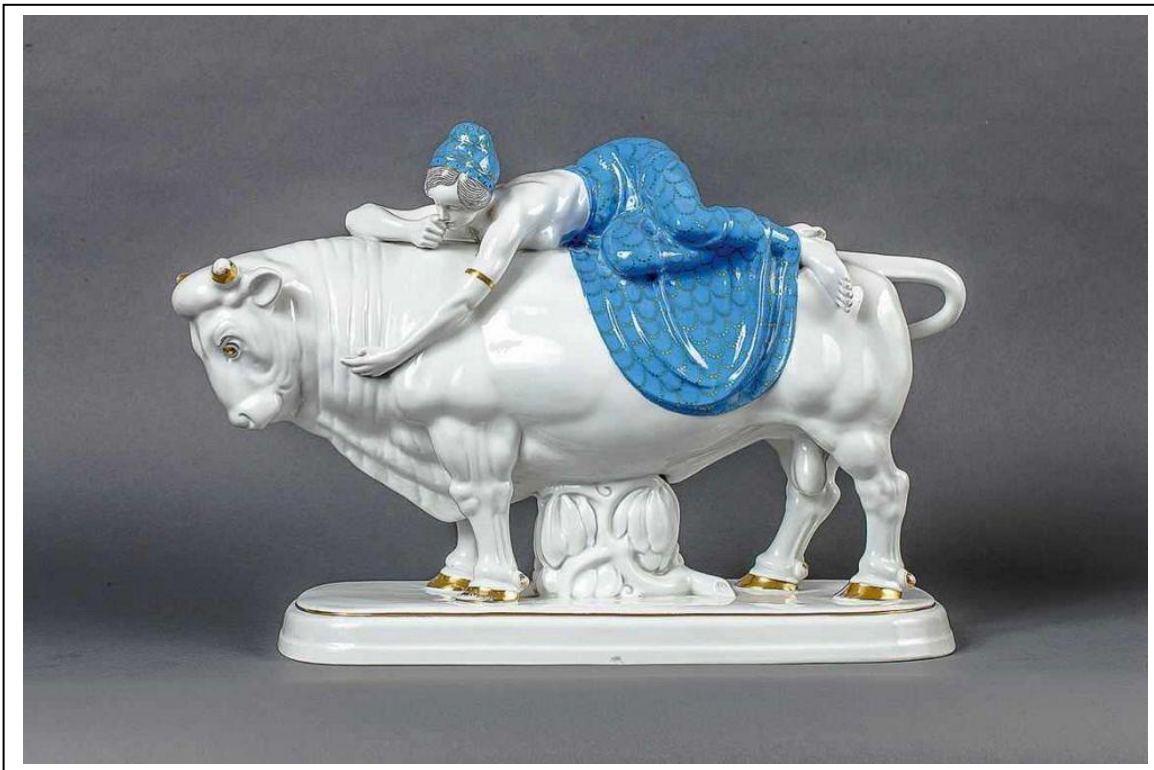
Designed by Carl Nacke for Fraureuth c 1915

---

A Goldscheider figure, *Batgirl*, also known as *Captured Bird*, the 'wings' painted in bright colours of pink, blue, yellow and black.

Height : 34 cms                      Width : 50 cms

Signatures : green stamp mark "Fraureuth Art Department" including in black brush font 19/299/15 underneath, and moulded *Nacke* on the top of the base.



The Fraureuth factory produced some of the most stylish Art Deco figures, before closing in 1935.

This figure was produced in at least two colourways – we sold a red version a couple of years ago.

**BURR & MUIR**

Cape Town 27-21-4181269

Partners : Geoff Burr & Graham Muir