

## **'FASHION LADY'**

By Paul Philippe  
French circa 1925

---

A bronze and ivory girl standing on her toes, her arms out on either side. Her stylised costume has a tight bejewelled bodice, long sleeves, a high collar, and an unusual heart-shaped layered short skirt. Her hands and head are in ivory. Her stockinged legs have a jewel-inlaid design on the thighs. She stands on a low base in bronze swirls. She has a typical 'Philippe' type face, with short cropped wavy hair.

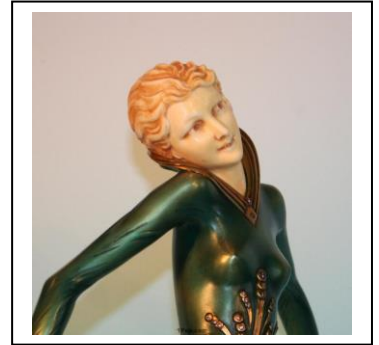
Height : 56 cms high

Signatures : Engraved 'P Philippe' and 'R u M' on the bronze base. 'R u M' is the foundry mark of Rosenthal und Maeder.



Philippe sculptures are much sought-after because of his very inventive costumes, his beautifully carved ivory, and his overall distinctive 'look'. This model is not common, and in fact has not been seen by the seller before.

Even though its height is only 56 cm, the figure is of extremely large proportion because the base is very low.



## **BURR & MUIR**

Cape Town 27-21-4221319

Partners : Geoff Burr & Graham Muir