

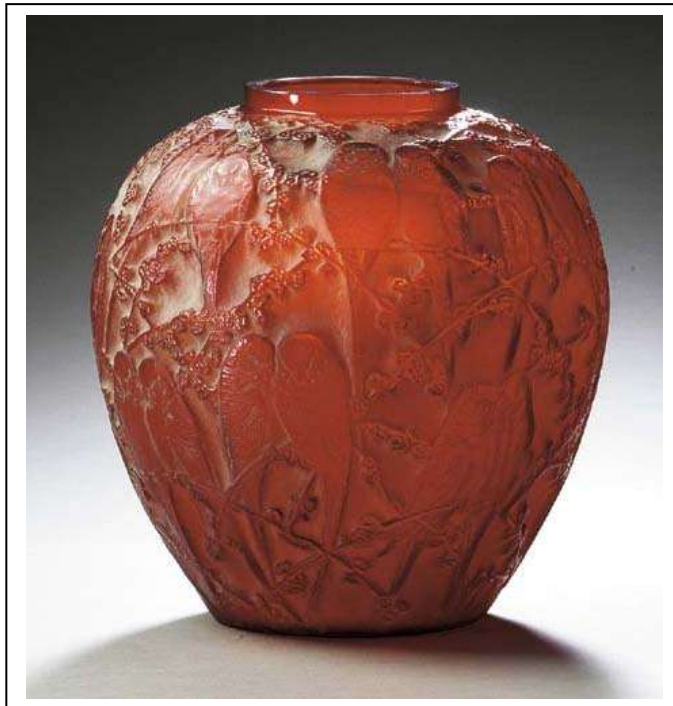
RED AMBER **PERRUCHES**

By Rene Lalique

First executed in 1919

A red amber vase of spherical shape, with a wide foot and small aperture, the design of pairs of lovebirds sitting amongst flowering branches. The remains of a white patina is in the recesses, accentuating the design.

- Height : 26 cms
- Signatures : Engraved script 'R Lalique' on base
- Reference : (i) Felix Marcilhac, Rene Lalique – Catalogue Raisonne Des Oeuvres de Verre, Paris, 1989, p. 410, No. 876.
(ii) Patricia Bayer & Mark Waller, The Art of Rene Lalique, 1988, p. 149 #272.



BURR & MUIR

Cape Town 27-21-4221319

Partners : Geoff Burr & Graham Muir

This model was produced in clear, opalescent, red, red amber, blue, green, and yellow glass.

This design has become increasingly popular, mostly because of the range of colours that are available. Prices for all *Perruches* vases have been climbing on a steady basis, some of the red amber versions shown below.

BURR & MUIR

Cape Town 27-21-4221319

Partners : Geoff Burr & Graham Muir